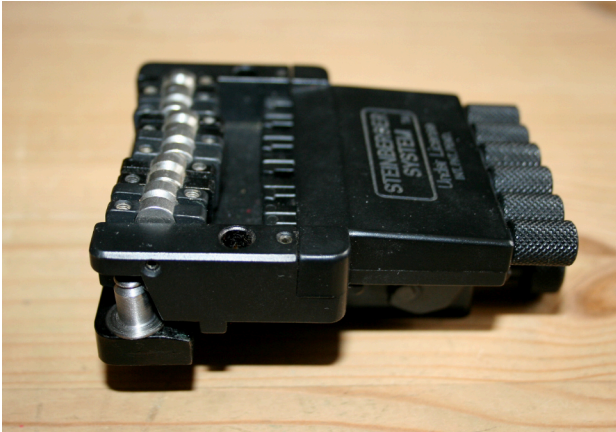


## Steel Posts for the Steinberger R-Trem



These steel posts, proved and tested on a large number of Steinberger KB Trems worldwide, are now available for the Steinberger R-Trem too. Although this trem doesn't have the "bent posts syndrome" to the same degree as the KB Trem, bent posts can and do happen from time to time.

Especially for use with heavier gauge strings (which leads to stronger forces on the posts) these steel posts are highly recommended. These steel posts better withstand the forces, due to a better material and the additional supporting "foot".

Clean up the threads in the base before installing the new posts. For doing so screw an M5 screw (or an M5 tap) through the base plate from the bottom side. This corrects minor issues with damaged thread parts in the upper area.



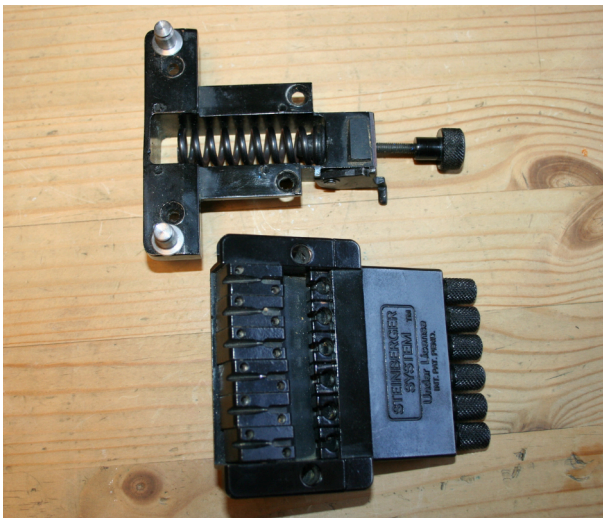
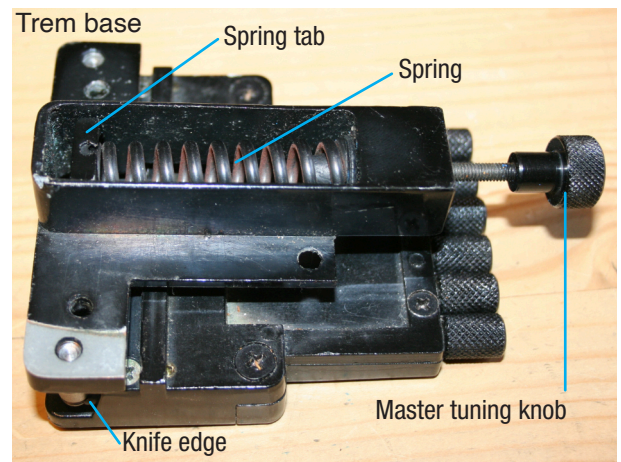
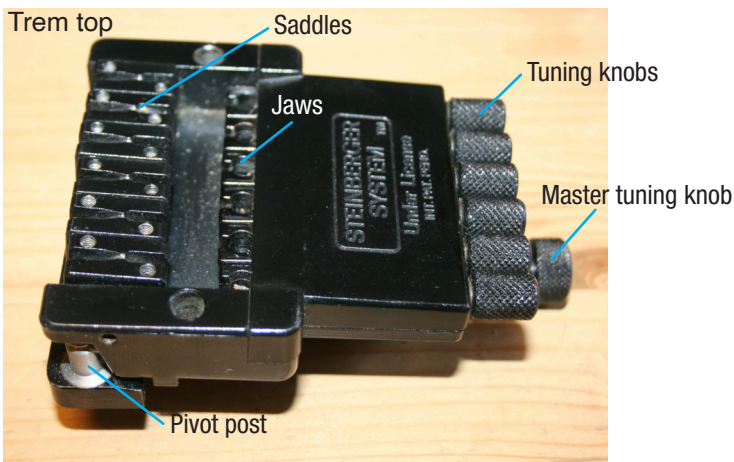
**Use padded pliers** for screwing the new steel posts in (I'm always using a thick leather strap between post and pliers), in order to avoid scratches. **Don't try to screw them in by hand, since the "feet" on the steel posts might have sharp edges.** Screw them in as tight as possible, so that the "foot" makes good contact with the base

You might also want to add some glue or thread locking compound when screwing the new posts in, in order to prevent them from getting loose during usage.

Bernd Meissner • [be.em@headless-europe.eu](mailto:be.em@headless-europe.eu)

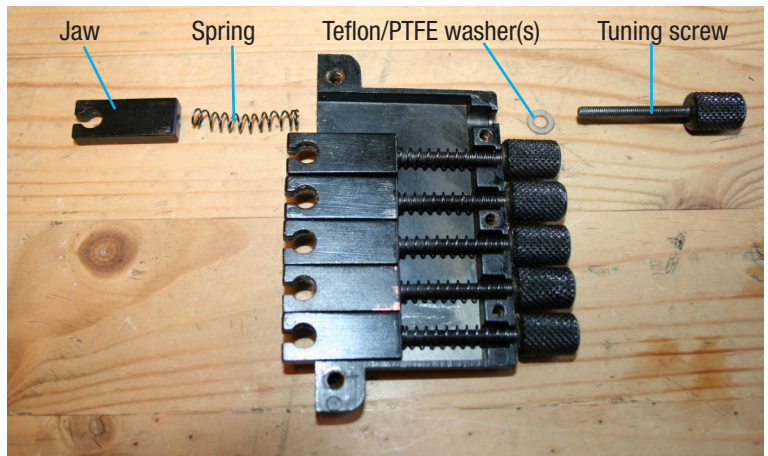
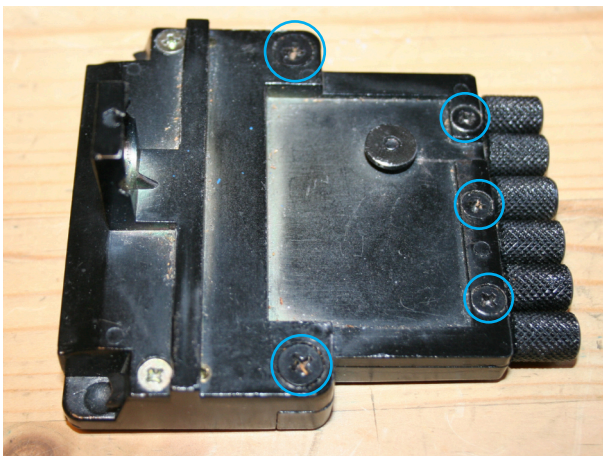
[https://www.headless-europe.eu/Steinierland/Knowledge/Info\\_R-Trem.htm](https://www.headless-europe.eu/Steinierland/Knowledge/Info_R-Trem.htm)

# Disassembly of a Steinberger R-Trem for cleaning and lubrication



For disassembling an R-Trem, follow these steps:

1. Unlock the trem. While the trem is usually locked for any setup work etc., unlocking it now enables you to check the spring tension (which will be lowered with the next step).
2. Turn the master tuning knob counter-clockwise until the spring is without any tension. You can check this by trying to move the trem top by hand. If the spring is without tension, the top can easily be moved backwards (away from the posts) a little bit.
3. Pull the top back (just about 2 mm, so that the knife edges no longer touch the pivot posts) and then upwards, to remove it from the base.



4. Remove the 5 marked screws to open the tuner housing.
5. Clean and lubricate the threads on the jaws and the tuning screws, using PTFE based lubricants (gun oil, bicycle lubricants). If you're using WD-40 for cleaning, make sure to completely wipe off any residues before lubricating the parts.
6. Make sure there is at least one, better two teflon washers on each tuning screw. Replace with new ones if these are worn.
7. Done. Reassemble the trem.

## NOTE:

It's not necessary to completely disassemble the trem for lubrication and service on the tuning screws. You can also take them out and reinstall them on the assembled trem. It may be necessary to take off the saddles in this case, to get the jaws out of the tuner housing. However, these pics might give you a better idea of how everything works, and how to remove/reassemble single parts easier.

Bernd Meissner • [be.em@headless-europe.eu](mailto:be.em@headless-europe.eu)

[https://www.headless-europe.eu/Steinland/Knowledge/Info\\_R-Trem.htm](https://www.headless-europe.eu/Steinland/Knowledge/Info_R-Trem.htm)